



GV600 Series

Rechargeable Trailer Tracker



The GV600 Series are ruggedized waterproof GPS trackers specially designed for use in trailer, tanker, reefer and flatbed truck tracking. They include up to a 90-day standby time using an internal rechargeable 5200 mAh battery pack, and are able to dual external power sources for redundancy. The built-in GPS receiver has best in class sensitivity and fast time to first fix. Multiple I/O interfaces are available for monitoring or controlling external devices, including a 1-wire interface for monitoring temperature and multiple serial ports. Vehicle trackers within the series support Quad Band 2G GSM/GPRS, multiple 3G variants with Global or Regional Applicability, LTE CAT-M1 (eMTC), LTE CAT-M2 (NB-IoT) on many bands supporting North American and European Cellular Operators. System integration is straightforward as complete documentation is provided for the full-featured @Track protocol. The @Track protocol supports a wide range of reports including position report, geo-fence alarm, low power alarm and more.

GV600 Product Series

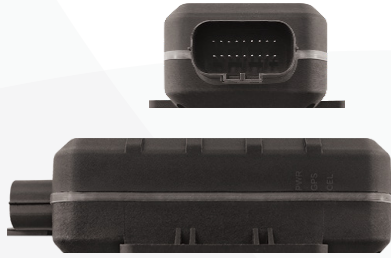
Model No.	Region	Technology	LTE Category	Operating Band	Certificate
GV608	Worldwide	GSM	/	GSM: 850/900/1800/1900 MHz	CE/E-Mark
GV628W	North America	GSM/UMTS/HSPA	/	GSM: 850/1900 MHz UMTS/HSPA: 850(B5)/1900(B2)	FCC/PTCRB/AT&T
GV648W	Worldwide	GSM/UMTS/HSPA	/	GSM: 850/900/1800/1900 MHz UMTS/HSPA: 850(B5)/850(B6)/900(B8)/1900(B2)/2100(B1)	
GV600MA_A	North America	LTE	eMTC	LTE: B2/B4	FCC/PTCRB/AT&T
GV600MA_V	North America	LTE	eMTC	LTE: B13	PTCRB/FCC/Verizon
GV600ME	Europe	GSM/LTE	eMTC/NB-IoT	GSM: 900/1800 MHz LTE: B3/B8/B20	CE/E-Mark

GSM Specifications

ITEM	MODEL	GV608	GV648W	GV628W	GV600ME
Operating Band		850/900/1800/1900 MHz		850/1900 MHz	900/1800 MHz
Data Transmission		GPRS multi-slot class 12 EDGE multi-slot class 12			

UMTS/HSPA Specifications

ITEM	MODEL	GV628W	GV648W
Operating Band		850(B5)/1900(B2)	850(B5)/850(B6)/900(B8)/1900(B2)/2100(B1)
HSPA Data Rate		5.6Mbps upload/7.2Mbps download	
HSPA Fallback		EDGE/GPRS/GSM quad band, EDGE MCS1-MCS9, 3GPP Release 6	



Advantages

- Ruggedized, designed for use in harsh heavy trucking environments, sealed against common fuel oils and other hazardous chemicals
- Multiple I/O interfaces for monitoring and controlling including composite inputs, ignition detection and serial port options
- 1-wire interface temperature sensors monitoring
- Low power consumption, 90-day long standby time with internal batteries
- Waterproof IP67 compliant
- GV600MA and GV600ME sub-models provide optional internal Bluetooth version

LTE Specifications

ITEM \ MODEL	GV600MA_A	GV600MA_V	GV600ME
Operating Band	B2/B4	B13	B3/B8/B20
Data Transmission	eMTC (DL) 300Kbps eMTC (UL) 375Kbps		eMTC (DL) 300Kbps eMTC (UL) 375Kbps NB1 (DL) 34Kbps NB1 (UL) 66Kbps

GNSS Specifications

ITEM \ MODEL	GV608	GV628W	GV648W	GV600MA	GV600ME
GPS Type	u-blox All-In-One GPS receiver			Qualcomm Gen 8C GNSS receiver	
Sensitivity	Cold Start: -148 dBm Tracking: -162 dBm			Cold start: -148 dBm Tracking: -159 dBm	
Position Accuracy (CEP50)	Autonomous: < 2.5m			Autonomous: < 2.5m	
TTFF (Open Sky)	Cold start: 29s average Hot start: 1s average			Cold start: 30s average Hot start: 1s average	

Interfaces

Digital Inputs	One positive trigger for ignition detection
Analog Inputs	One analog input (0~30V)
1-Wire	Support 1-wire temperature sensor
Power Output	3.3V voltage output for external device
Digital Inputs/Outputs	Four negative trigger inputs for normal use, or Four open drain outputs 150 mA max drive current
Communication Ports	One TTL port, one RS232 port
Cellular Antenna	Internal antenna
GPS Antenna	Internal antenna
Indicator LED	CEL, GPS and power
Connectors	18 pin waterproof connector

General Specifications

Dimensions	135mm*62mm*38mm
Weight	189g
Operating Voltage	DC 8V to 32V
Internal Battery	Li-ion, 3.7V, 5200 mAh 18650 battery pack
Standby Time	90-day standby time with 15 minutes online and position reported once per day
Waterproof	IP67 Compliant
Operating Temperature	-20°C ~ +60°C -20°C ~ +60°C for storage

Air Interface Protocol

Transmit Protocol	TCP, UDP, SMS
Scheduled Timing Report	Report position and status at preset intervals
Geo-fence	Geo-fence alarm and parking alarm, support up to 20 circular and 20 polygon geo-fence regions
Low Power Alarm	Alarm when backup battery is almost exhausted
Power On Report	Report when the device is powered on
Special Alarm	Special alarm based on the digital/analog inputs, speed or G-sensor
Remote Control	OTA control of digital outputs

Optional Bluetooth Specifications (Available for GV600MA, GV600ME)

Frequency	2.4 GHz RF transceiver compatible with Bluetooth low energy (BLE)
Receiver Sensitivity	Excellent receiver sensitivity -88 dBm
Max out RF Power	Up to 10 dBm
BT Antenna	Internal antenna (GV600MA, GV600ME)



Queclink Wireless Solutions Co., Ltd.

Address: Office 501, Building 9, No. 99 Tianzhou Road, Shanghai, China 200233

Tel: +86 21 5108 2965

Fax: +86 21 5445 1990

Web: www.queclink.com

Email: sales@queclink.com